



A UNIQUE STUDENT EXPERIENCE

**34,000
STUDENTS**

**132
NATIONALITIES**

**ONE OF
THE UK'S BEST
STUDENT CITIES**

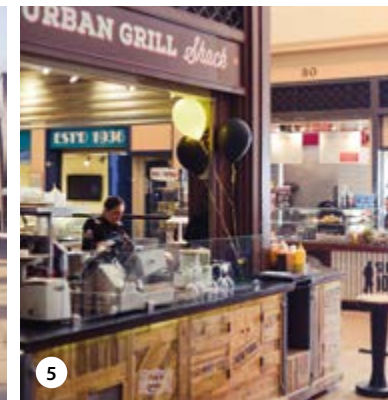
Newcastle has been voted the number one city for students four times since 2009, most recently in the WhatUni Student Choice Awards 2014 (Best City Life)

WELCOME TO NEWCASTLE

HOME OF NORTHUMBRIA UNIVERSITY



CONSISTENTLY VOTED ONE OF THE BEST AND MOST AFFORDABLE PLACES FOR STUDENTS TO LIVE IN THE UK.



- 1. Grey's Monument and Grey Street**
An iconic monument in one of the UK's best loved architectural streets
- 2. Coffee shops**
So many places to meet and relax
- 3. Central Arcade**
A beautiful triple-domed arcade in the centre of town, dating back to 1837
- 4. Intu Eldon Square Shopping Centre**
A shopping paradise in the heart of the city
- 5. Grainger Market**
A thriving, busy market

“

MY FAVOURITE THING ABOUT NEWCASTLE IS THE QUAYSIDE AND CITY CENTRE. THERE ARE GREAT CAFES AND RESTAURANTS, AS WELL AS NIGHTLIFE.

Dobrina Koleva, BA (Hons) Marketing Management, Bulgaria

”



1



2



“
NEWCASTLE IS
AFFORDABLE FOR
STUDENTS AND IS
A BEAUTIFUL CITY.
”

Dheeraj Akella, MSc Engineering
Management, India

3



4



5



6

**FROM ICONIC LANDMARKS
TO BEAUTIFUL LANDSCAPES
AND WORLD CLASS CULTURE,
YOU'LL NEVER BE SHORT OF
THINGS TO DO.**

- 1. Jesmond Dene**
A beautiful park in the heart of the city
- 2. Ouseburn Valley**
Students admiring the Quayside view
- 3. Sage Gateshead**
A landmark live music venue and concert hall




- 4. Chinatown**
Revellers welcome in Chinese New Year
- 5. Newcastle Quayside**
A busy day on the banks of the River Tyne
- 6. BALTIC Centre for Contemporary Art**
One of our world-renowned cultural venues












Newcastle has its own international airport and national rail links, making it easy to explore the rest of the UK and Europe.



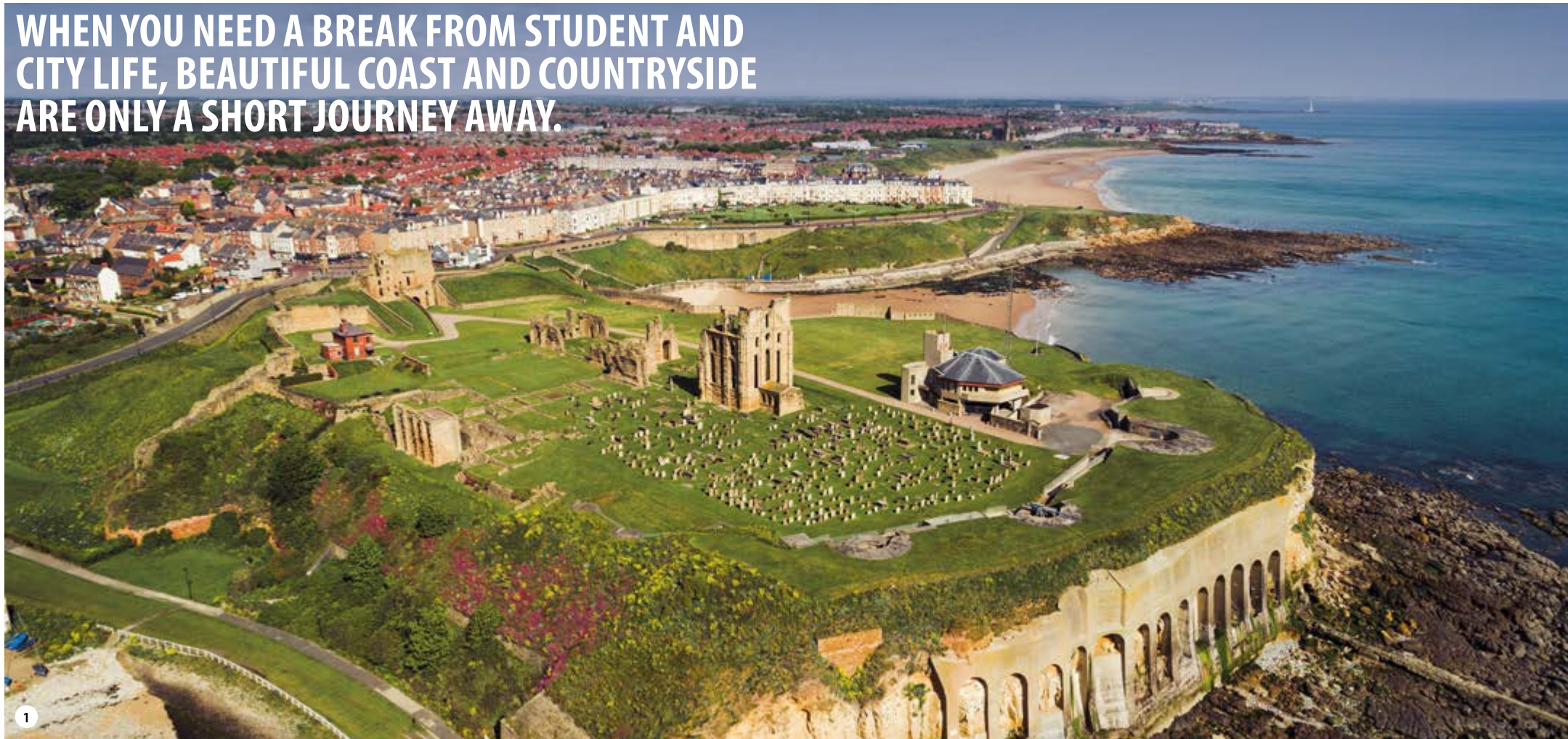
THE UK BY RAIL

		
LONDON 3 HOURS	EDINBURGH 1H 30M	YORK 1 HOUR

EUROPE BY AIR

		
AMSTERDAM 1H 20M	BARCELONA 2H 35M	BERLIN 2H 10M
		
BRUSSELS 1H 25M	COPENHAGEN 1H 35M	DUBLIN 1H 10M
		
GENEVA 2H 05M	PARIS 1H 50M	ROME 3H 05M

WHEN YOU NEED A BREAK FROM STUDENT AND CITY LIFE, BEAUTIFUL COAST AND COUNTRYSIDE ARE ONLY A SHORT JOURNEY AWAY.



1. Tynemouth Castle and Priory

A stunning view of the 2000 year old settlement, overlooking the North Sea and River Tyne

2. Cullercoats Bay

Beautiful seascape just minutes from the city centre

3. Tynemouth

A sunny stroll along the pier

4. St. Mary's Lighthouse

Climb the 137 steps to the top for the most spectacular views of the North East coast



MY FAVOURITE THING TO DO ON A WEEKEND IS PROBABLY VISITING TYNEMOUTH AND GOING FOR FISH AND CHIPS BY THE BEACH.

Veronica de Gongora ,
BA (Hons) Fashion Design
and Marketing, Spain





1

FROM WORLD HERITAGE SITES TO MAJESTIC CASTLES, OUR SCENERY IS SIMPLY STUNNING.

1. Hadrian's Wall

Part of Northumberland National Park—a World Heritage Site

2. Durham Cathedral

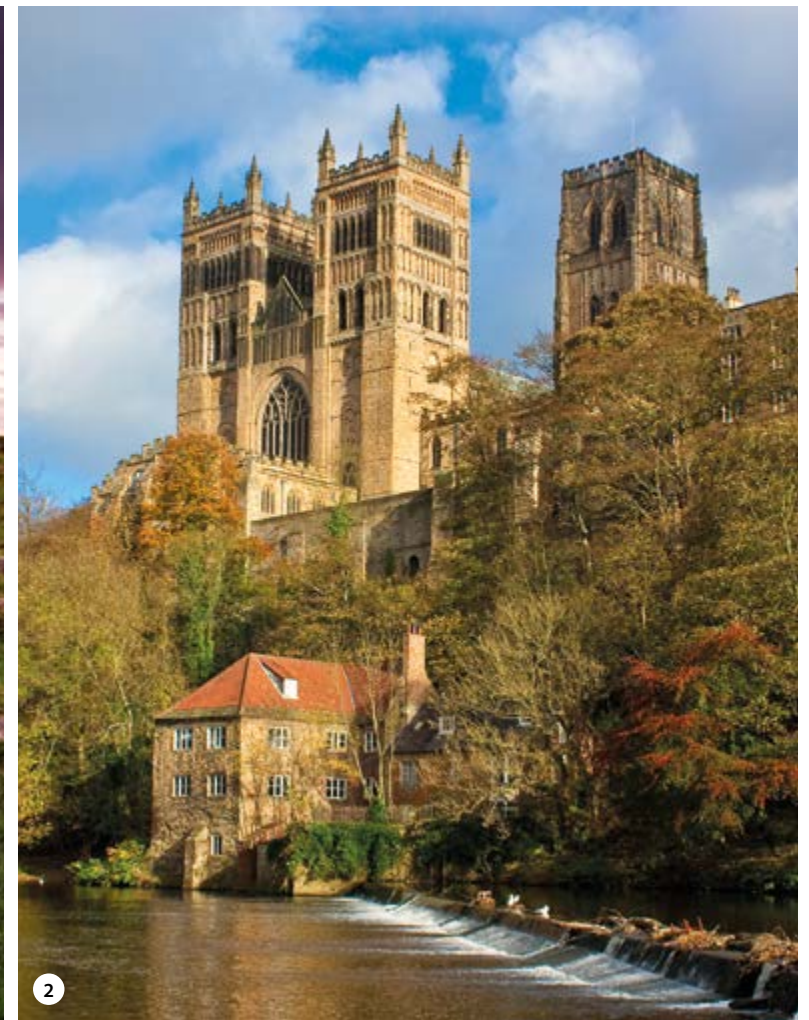
A millennium of history resides at this World Heritage Site

3. Angel of the North

World famous Anthony Gormley sculpture in Gateshead

4. Alnwick Castle

The home of the Duke of Northumberland, made famous as 'Hogwarts' in the Harry Potter film franchise



2



3



4

200
SUBJECTS RATED WITHIN
THE TOP 30
Complete University Guide 2018

TOP 50
IN THE UK FOR
RESEARCH POWER
2014 Research Excellence Framework

SILVER
FOR TEACHING EXCELLENCE
Teaching Excellence Framework 2017

2ND
BEST UNIVERSITY
LIBRARY
Times Higher Student Experience Survey 2015

TOP 10
IN UK FOR
STUDENT FACILITIES
Times Higher Education
Student Experience Survey 2016-17



“

FACILITIES AT THE UNIVERSITY ARE TOP CLASS, NORTHUMBRIA UNIVERSITY IS INVESTING IN THE FUTURE.

Timothy Tan, MSc Business with International Management, Malaysia

”



FOUR STARS OVERALL IN THE QS STARS UNIVERSITY RATINGS

OUR AMAZING CAMPUSES AND FIRST CLASS FACILITIES MAKE US ONE OF THE BIGGEST, MOST ADVANCED AND EXCITING UNIVERSITIES IN THE UK.



£52 MILLION INVESTMENT IN OUR CAMPUS WILL CREATE TWO NEW STATE OF THE ART BUILDINGS FOR COMPUTER AND INFORMATION SCIENCES AND ARCHITECTURE AND BUILT ENVIRONMENT STUDENTS.



FIND OUT MORE AT
NORTHUMBRIA.AC.UK/VIRTUALTOUR

- 1. Computer and Information Sciences building**
Artist's impression (opening January 2018)
- 2. Historic Sutherland Building**
New home to the School of Architecture



Coach Lane Campus
Our Coach Lane campus is a short bus journey from the City Campus and is home to education, nursing, healthcare and social work students. It hosts a Clinical Skills Centre, cafes and sports facilities and links to the city centre campus via a free bus.



London Campus
Northumbria University also has a London campus, which allows students to combine our academic excellence with a campus in the UK capital city's business and finance district.



“ THE FACILITIES ARE TOP-NOTCH. THE 24 HOUR LIBRARY CATERS FOR DIFFERENT LEARNING STYLES OF STUDENTS AND HAS A QUIET STUDY AREA. ”

Rafael Antonio David, MSc
International Sport Management,
Philippines

WITH AN AWARD WINNING STUDENTS' UNION, OVER 100 STUDENT SOCIETIES, LIVE MUSIC VENUES AND PLENTY OF PLACES TO EAT AND DRINK, NORTHUMBRIA HAS IT ALL.



1



2



3



4

- 1. Habita**
One of the many social venues on campus
- 2. Students' Union**
Live music venue
- 3. Longsands Beach**
Students enjoying a sunny day at the beach
- 4. Tynemouth village**
So much to see and do, on campus, in the city and beyond

WINNER OF THE NATIONAL NUS STUDENT OPPORTUNITIES AWARD
NUS Awards 2016



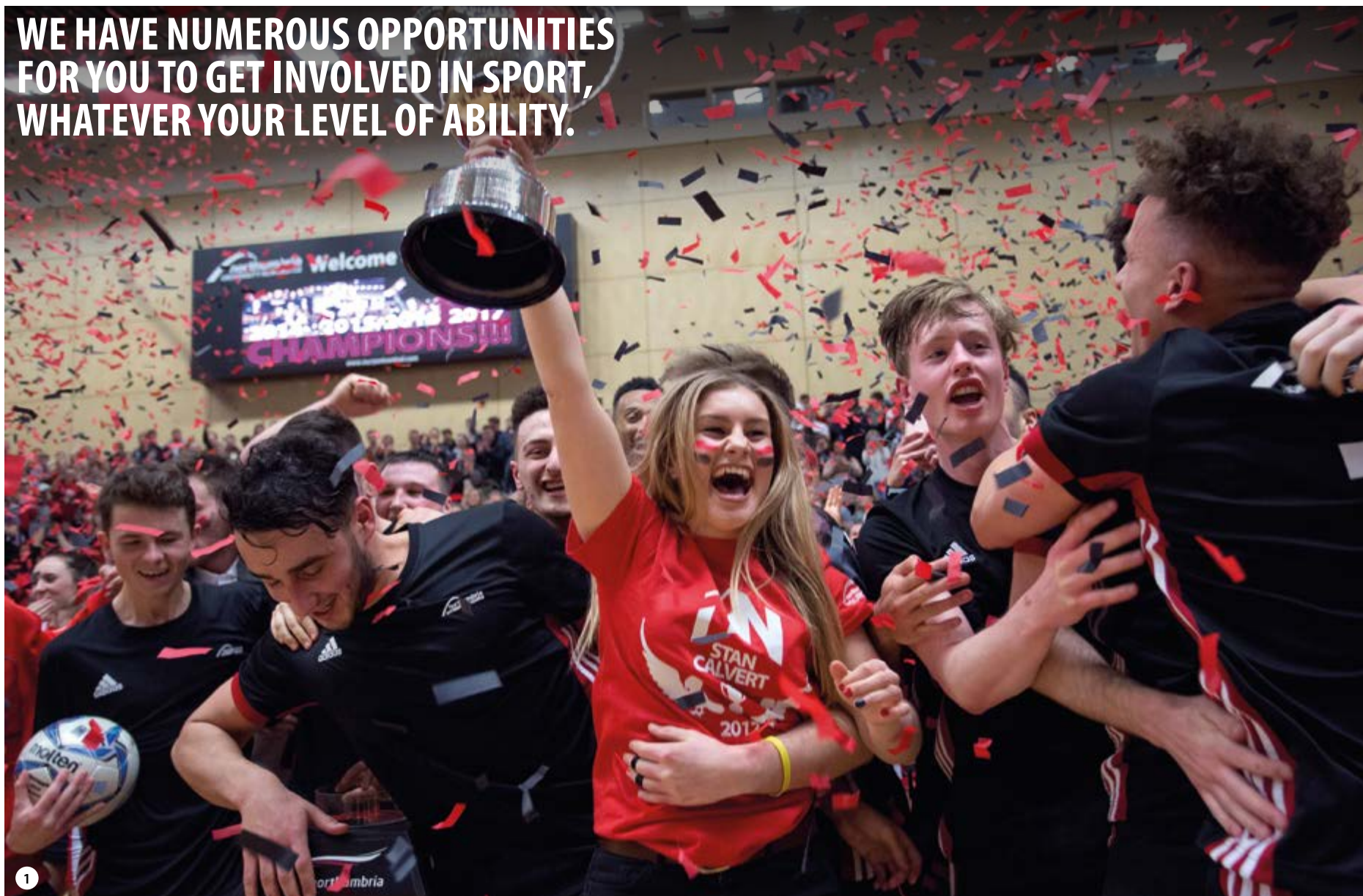
I'VE BEEN INVOLVED IN VOLUNTEERING EVENTS SUCH AS RAG (RAISE AND GIVE). HELPING PEOPLE IS ALWAYS A GOOD THING TO DO. PARTICIPATING IN THESE EVENTS HAS BEEN A GREAT EXPERIENCE AND HAS MADE ME A LOT OF FRIENDS.

Sandean Fernandes, BSc Mechanical Engineering, India



↑
FIND OUT MORE AT
MYSU.CO.UK

WE HAVE NUMEROUS OPPORTUNITIES FOR YOU TO GET INVOLVED IN SPORT, WHATEVER YOUR LEVEL OF ABILITY.



1



2



3

- 1. Stan Calvert Cup Winners**
Team Northumbria victorious at the Stan Calvert Varsity games
- 2. Swimming Pool**
25m swimming pool within Sport Central at city campus
- 3. Clash of the Titans**
Northumbria University and Newcastle University go head to head in rugby
- 4. International Basketball**
Our on-campus sporting facilities host many outstanding events



4

4TH IN THE UK FOR SPORT

Times Higher Education Student Experience Survey 2016

£30 MILLION SPORT CENTRAL FACILITY

8TH FOR TEAM NORTHUMBRIA IN THE BUCS NATIONAL LEAGUE TABLE

British Universities & Colleges Sport league table for the third year running in 2017



I'VE LOVED EVERY MINUTE, FROM PLAYING FOR TEAM NORTHUMBRIA, BEING A VOLUNTEER AND INTERN, SPENDING A SUMMER COACHING IN ZAMBIA TO WINNING THE STAN CALVERT CUP AS STUDENT SPORT PRESIDENT

Brogan O'Connor,
BSc (Hons) Applied Sport and Exercise Science, UK



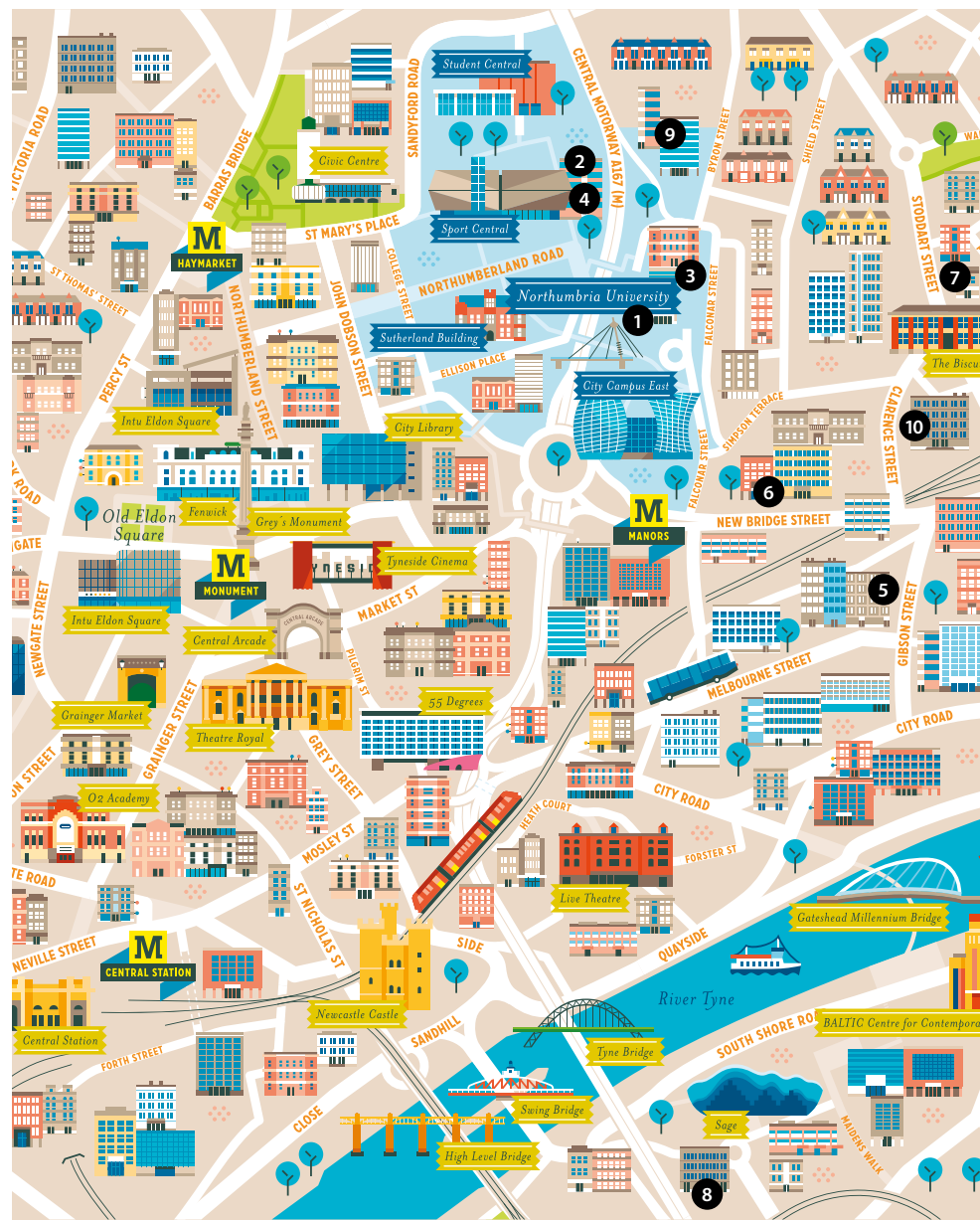
FIND OUT MORE AT
NORTHUMBRIASPORT.COM

 **NORTHUMBRIA UNIVERSITY SPORT**

 **@NORTHUNISPORT**

 **NORTHUMBRIAUNISPORT**

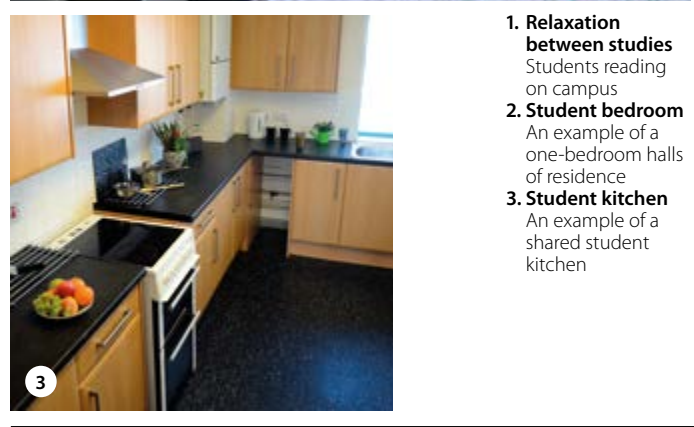
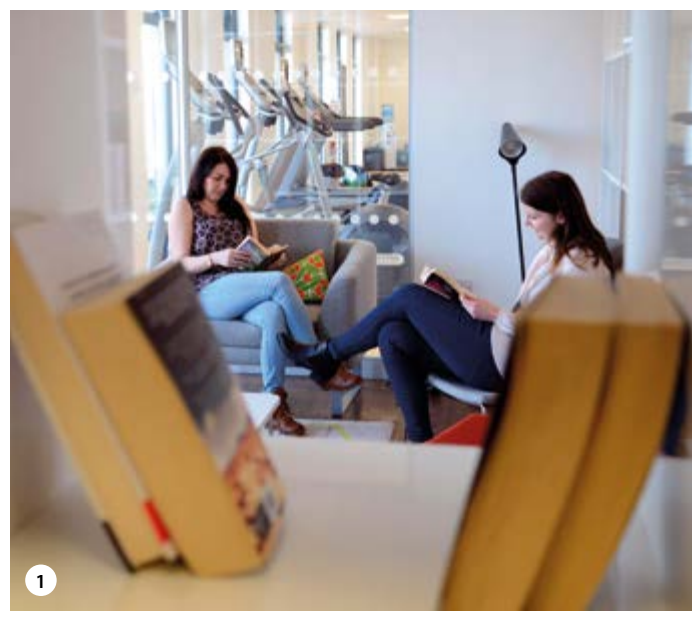
ACCOMMODATION



Scale
10 minute walk

1. Camden Court
2. Claude Gibb Hall
3. Glenamara House
4. Lovaine Hall & Flats
5. Liberty Quay
6. New Bridge Street Residence
7. Stephenson Building
8. Trinity Square
9. Victoria Hall
10. Winn Studios

WITH ACCOMMODATION ON AND OFF CAMPUS, YOU'RE NEVER MORE THAN 20 MINUTES WALK FROM THE CITY CAMPUS.



1. **Relaxation between studies**
Students reading on campus
2. **Student bedroom**
An example of a one-bedroom halls of residence
3. **Student kitchen**
An example of a shared student kitchen

1ST IN THE UK FOR STUDENT BROADBAND

National Student Housing Awards 2016

TOP THREE IN THE UK FOR STUDENT ACCOMMODATION AND BEST MOVING-IN EXPERIENCE

National Student Housing Awards 2016

8TH IN THE UK FOR BEST QUALITY OF STUDENT LIFE

Lloyds Bank Student Life Survey 2015

WE GUARANTEE ACCOMMODATION FOR ALL NORTHUMBRIA UNIVERSITY STUDENTS

24 HOUR SECURITY



THE BEST THING ABOUT LIVING IN HALLS IS MEETING NEW PEOPLE FROM DIFFERENT BACKGROUNDS AND CULTURES.

**Kong Lim,
Bar Professional Training Course (BPTC),
Malaysia**



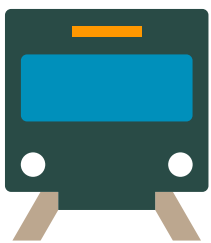
**FIND OUT MORE AT
NORTHUMBRIA.AC.UK/ACCOMMODATION**

NEWCASTLE IS ONE OF THE MOST AFFORDABLE PLACES FOR STUDENTS TO LIVE IN THE UK. HERE'S A QUICK GUIDE TO HELP YOU PLAN YOUR FINANCES.



ACCOMMODATION
£70 – £130 PER WEEK

Northumbria University has some of the most affordable student accommodation in the UK, with high speed Wi-Fi and bills included as standard.



TRANSPORT
BUS £1.50 – £3
METRO £2 – £4
TRAIN £6+

You can walk to most places in the city centre, but if you want to explore, our public transport is budget friendly.



FOOD

There are a number of low cost supermarkets near both the campus and our accommodation. Grainger Market in the city centre has a range of low cost, fresh produce. There are also a large number of international food stores offering familiar products, but expect to pay a higher price than back home for some things.

TIP:
COOK MEALS WITH FRIENDS AND FLATMATES TO SHARE THE COST AND SOCIALISE.

NU SPORT CENTRAL
£18 – £28 PER MONTH

Our £30 million state of the art sports facility offers students the place to get fit, have fun and go the extra mile. Whether you're a talented athlete or an enthusiastic beginner, Northumbria Sport has something for everyone. Ranging from clubs and leagues, as well as the chance to gain industry-specific experience through our Volunteering and Internship programme.

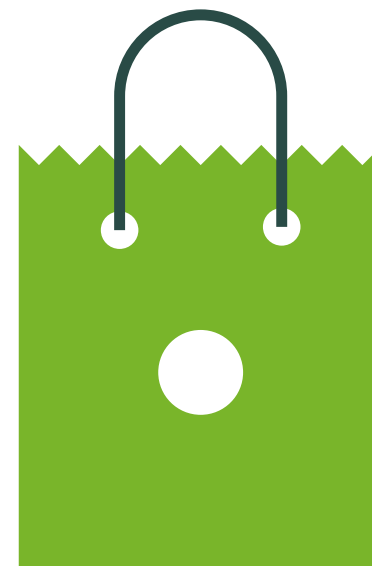


MOBILE PHONE
£20 – £45 PER MONTH

These can range in price but there are many deals to be had if you shop around.

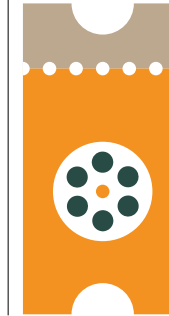
TV LICENCE
£13 PER WEEK

If you have a TV you need a licence by law.



SHOPPING

Newcastle has a vast array of retail outlets to suit all budgets. We have budget friendly markets and high street shops to high-end department and designer stores and everything in-between!

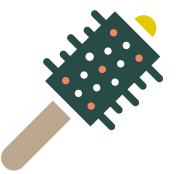


CINEMA TICKET
£5 – £8

These can range in price but there are many deals to be had if you shop around.

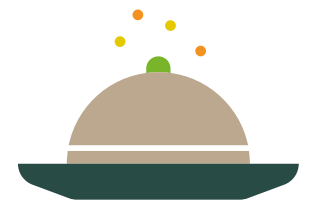


HEALTH & BEAUTY
£30 – £60 PER MONTH



EATING OUT
£7 – £11

Newcastle has a wide range of budget friendly places to eat. A one course meal in an inexpensive restaurant will typically be around £7 – £11.



DRINKS
SOFT DRINKS £1.50
WINE £2.50 – £5.00
BEER £2.50 – £4.00



TIP:
BUY AN NUS CARD FOR AROUND £13 AND YOU CAN SAVE 10 – 20% IN MANY PLACES.

ENHANCE YOUR EMPLOYABILITY BY GAINING PROFESSIONAL WORK EXPERIENCE WHILE YOU STUDY.



1

- 1. **Northumbria University Congregation ceremony**
All the hard work has paid off, a time to celebrate our students' achievements
- 2. **Business Clinic**
State-of-the-art premises in the heart of the city, enabling business students to participate in a 'consultancy firm' to provide advice for real clients

NEWCASTLE BUSINESS SCHOOL IS IN THE TOP 1% OF BUSINESS SCHOOLS WORLDWIDE

The Association of Advanced Collegiate Schools of Business

NUMBER 1 IN THE UK FOR GRADUATE START-UPS BASED ON TURNOVER

Higher Education Business and Community Interaction Survey (HEBCIS) 2015-16

50 PROFESSIONAL BODIES ACCREDIT OUR COURSES

560 EMPLOYERS SPONSOR OUR STUDENTS



I DID A THREE MONTH SUMMER PLACEMENT AT THE INSTITUTE OF GENETIC MEDICINE AT CENTRE FOR LIFE, NEWCASTLE. I USED ALL THE MOLECULAR BIOLOGY TECHNIQUES I LEARNED IN CLASS AND ALSO LEARNT NEW TECHNIQUES THAT I THINK WILL BE VERY USEFUL IN MY PROFESSIONAL LIFE.

Leonardo Amorim,
BSc Forensic Science, Brazil



HOW WE CAN HELP YOUR FUTURE:

- PLACEMENTS AND INTERNSHIPS
- ACCREDITATIONS AND PARTNERSHIPS
- LIVE PROJECTS WITH CLIENTS AND CUSTOMERS
- DEDICATED CAREERS AND EMPLOYMENT SERVICE SUPPORT
- STUDENT AND GRADUATE ENTERPRISE

Some of the national and international businesses that offer placements and internships to our students:



2

SIR JONATHAN IVE KBE**BA (Hons) Design for Industry**

Chief Design Officer at Apple overseeing the Apple Industrial Design Group and also providing leadership and direction for the Human Interface software teams. He is credited as being the designer of the MacBook Pro, iMac, MacBook Air, Mac mini, iPod, iPod Touch, iPhone, iPad, iPad Mini, Apple Watch and iOS 7. In 2012 he was appointed Knight Commander of the Order of the British Empire for services to design and enterprise.

**NEIL MARSHALL****BA (Hons) Media, Culture & Society**

Film director, editor and screenwriter best known for his work on Game of Thrones for which he was nominated for a Primetime Emmy Award for Outstanding Directing for a Drama Series.

**JULES QUINN****BA (Hons) Fashion Marketing**

Named in the Forbes 30 Under 30 Europe list — in retail and commerce, North East entrepreneur Jules' company The*Teashed has continued to grow from strength to strength, since it launched in 2011. Her teas are available online and through high street retailers such as Fenwick and John Lewis with her newer product Popaball being sold in Fenwick, Lakeland and Selfridges.

**VICTORIA PENDLETON CBE****BSc Sport & Exercise Science**

One of Britain's most successful female track cyclists and Olympic gold medallist. She was appointed Member of the Order of the British Empire (MBE) in 2009 and Commander of the Order of the British Empire (CBE) in 2013 for services to cycling.

**TIM BROWN****BA (Hons) Design for Industry**

Chief Executive of IDEO USA, one of the world's leading design consultancies. Tim has earned numerous design awards and has exhibited work at the Axis Gallery in Tokyo, the Design Museum in London and the Museum of Modern Art in New York. He also advises senior executives and boards of global Fortune 100 companies and writes for the Harvard Business Review.

**DR TSHERING LAMA****Health Development Studies, MA Public Health & PhD Telemedicine**

Dr Tshering Lama came to Northumbria University in 2002, the first student from the Hyolmo ethnic group in Nepal to go to a British university. He stayed on to take MA in Public Health and then a PhD in Telemedicine to improve healthcare in remote parts of his home country. Dr Lama, is now the director of the independent child rights organisation Childreach Nepal.

NORTHUMBRIA UNIVERSITY AND ST GEORGE'S UNIVERSITY (SGU) SCHOOL OF MEDICINE IN GRENADA ARE CELEBRATING THE 10TH ANNIVERSARY OF THE KEITH B. TAYLOR GLOBAL SCHOLARS PROGRAM: PATHWAY TO GLOBAL MEDICINE, WHICH THEY CREATED TOGETHER IN 2007.



St George's University, Grenada

GAIN FANTASTIC INTERNATIONAL EXPERIENCE BY STUDYING IN UP TO THREE COUNTRIES.

ST GEORGE'S UNIVERSITY SCHOOL OF MEDICINE WAS FOUNDED 40 YEARS AGO AND HAS MORE THAN 15,000 GRADUATE PHYSICIANS IN THE GLOBAL HEALTHCARE SYSTEM.

SGU GRADUATES HAVE GAINED REGISTRATION WITH MEDICAL LICENSING AUTHORITIES IN MORE THAN 50 COUNTRIES INCLUDING THE US, UK AND CANADA.

SGU OFFERS PARTIAL TUITION SCHOLARSHIPS OF UP TO 40% FOR QUALIFIED STUDENTS FOR THE MEDICAL DEGREE.

SGU MEDICAL GRADUATES HAD A 96% FIRST-TIME PASS RATE ON THE USMLE STEP 1 IN 2016. NO OTHER MEDICAL SCHOOL IN THE WORLD PROVIDES MORE NEW DOCTORS TO THE US HEALTHCARE SYSTEM.

Pre-Medical Year 1 at Northumbria (UK)	6-Year Pathway
Pre-Medical Year 2 at Northumbria (UK)	5-year Pathway Entry Point for A-levels / International Baccalaureate / Indian Standard XII
Medical Year 1: Basic Sciences at Northumbria (UK) or SGU (Grenada)	4-year Pathway Entry point for Bachelors Degree
Medical Year 2: Basic Sciences at St. George's University (Grenada)	
Medical Year 3: Clinical Rotations in US, UK, Canada or Grenada through SGU affiliated hospitals	
Medical Year 4: Clinical Rotations in US, UK, Canada or Grenada through SGU affiliated hospitals	



St. George's University
THINK BEYOND
Grenada, West Indies

MORE THAN 1,700 STUDENTS HAVE STARTED THEIR MEDICAL DEGREE AT NORTHUMBRIA AND GRADUATED FROM SGU WITH THE DOCTOR OF MEDICINE DEGREE.



ONE OF THE THINGS I REALLY LIKE AT NORTHUMBRIA IS THE SMALL CLASS SIZE WHICH MEANS YOU HAVE PLENTY OF ACCESS TO YOUR LECTURERS. AND I LOVE THE FACT THAT THE UNIVERSITY IS SO DIVERSE.

Deborah Tyokighir,
SGU medical student, Nigeria



FIND OUT MORE AT
NORTHUMBRIA.AC.UK/MEDICINE
OR SGU.EDU/KBT

WE OFFER THE CHANCE TO STUDY IN ANOTHER COUNTRY AS PART OF YOUR NORTHUMBRIA EXPERIENCE, FOR A WHOLE SEMESTER OR EVEN A FULL ACADEMIC YEAR IN COUNTRIES AS DIVERSE AS SPAIN OR SOUTH KOREA, CANADA OR CHINA.



"THE WORLD IS TOO BEAUTIFUL TO NOT EXPLORE."

Daniel Siddle studying Business Management at Deakin University, Australia



"NORTH EAST COAST, SPANISH COAST. SAME THING!"

Guy Paton studying Business with Marketing Management at Universidad de Murcia, Spain



"BRB. GOING TO SOUTH KOREA."

Dexter Mudondo studying International Business Management at Korea University, South Korea

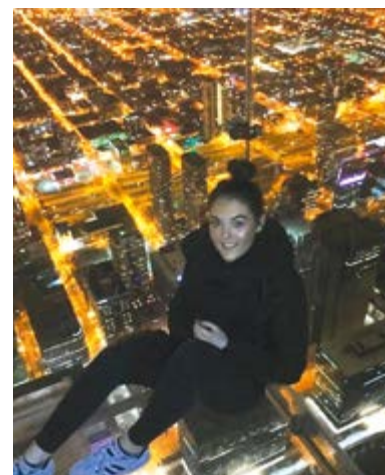


"WHEN YOU TRAVEL AND YOU EAT THE DELICACIES."

Ben Walker studying Marketing Management at Université Claude Bernard Lyon, France

"THOSE BLUE SKIES OF NYC."

Laura Whittle studying International Business Management at The College of New Jersey, USA



"DON'T BE AFRAID TO SOAR TO NEW HEIGHTS!"

Victoria Sanson studying International Business Management at The College of New Jersey, USA

"ENJOY YOUR WEEKEND WHEREVER YOU ARE IN THE WORLD."

Lydia Hope studying Business with Tourism Management at Swinburne University of Technology, Australia

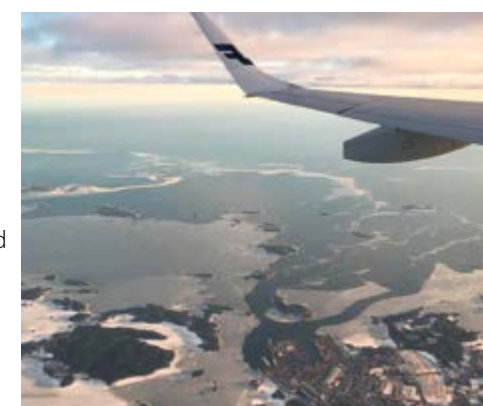


"REMEMBER EXPLORING THE COUNTRY YOU MAKE HOME FOR A SEMESTER OR TWO IS ALL PART OF THE STUDY ABROAD EXPERIENCE."

Millie Price studying Food Science & Nutrition at Edith Cowan University, Perth, Australia

"TOUCHING DOWN FOR THE YEAR AHEAD."

Matt Wheeler studying Business with International Management at Metropolia Ammattikorkeakoulu, Finland



4,500 STUDENTS CURRENTLY STUDYING ABROAD

“

THE EXPERIENCE OF STUDYING AND WORKING ABROAD WAS PRICELESS. I'D RECOMMEND IT TO EVERYONE.

Marius Nazare, BA (Hons) International Business Management, UK

”



NUSTUDENTSABROAD

ENGLISH LANGUAGE AND SUMMER SCHOOL



Pre-sessional

Six week or 11 week options to improve your English.

In-sessional

Additional support from dedicated tutors once you begin your studies to develop your academic language skills.

UniLang

Additional classes in a range of other languages, useful if you are spending the summer in Europe or studying abroad as part of your course.

Languages include:

- French
- German
- Spanish
- Italian
- Japanese
- Mandarin Chinese.

Accredited by the

 for the teaching
 of English in the UK

Northumbria International Summer School

Northumbria International Summer School is open to EU and international undergraduate students.

The three week programme includes field trips and visits around the region to sample some of our amazing culture and heritage.



FOUNDATION AND PRE-MASTERS

WE HAVE A RANGE OF FOUNDATION AND PRE-MASTERS PATHWAY PROGRAMMES WHICH ARE DESIGNED TO BRIDGE THE GAP BETWEEN YOUR CURRENT ACADEMIC AND ENGLISH LEVEL AND YOUR CHOSEN ROUTE OF STUDY.



Undergraduate

University Foundation Year programmes

If you are an EU student and have met our English language requirements but are unable to meet the academic requirements for direct entry, we have a range of foundation programmes to suit you. See website for details of programmes.

International Foundation Programme

If you are looking to come and study at Northumbria but do not currently have the relevant academic or English language qualifications for entry onto your chosen undergraduate or postgraduate degree, this 2 semester course will help you reach your goal. This multi-disciplinary programme provides progression to a wide range of degree programmes at Northumbria University.

You can choose one of the pathways:

- Social Sciences and Humanities
- Art, Design and Media
- Business
- Engineering.

You will also study core modules in:

- Global Studies and Grammar
- Reading and Critical Analysis
- Intercultural Communication
- Essay and Report Writing.



DISCOVER MORE AT
NORTHUMBRIA.AC.UK/INTERNATIONAL



Postgraduate

Graduate Diploma in Business

This course will support you in managing the transition into our Masters in Business programmes. The diploma offers integrated English language development for business as well as modules which are designed to give you a detailed understanding and knowledge of how business works.

Graduate Certificate in Business

This certificate course is designed to help students gain the skills, knowledge and confidence needed for successful Masters-level study. Students will be supported in managing the transition onto Masters programmes at Northumbria University.



DISCOVER MORE AT
NORTHUMBRIA.AC.UK/INTERNATIONAL

Applied Sciences

- Applied Sciences (Foundation Year)
- Biology
- Biology (Biotechnology)
- Biology (Neurobiology)
- Biomedical Science
- Chemistry
- Criminology and Forensic Science
- Food Science and Nutrition
- Food Science and Nutrition (Human Nutrition)
- Forensic Science
- International Medicine Pathway

Architecture and Built Environment

- Architecture
- Building Surveying
- Built and Natural Environment (Foundation Year)
- Interior Architecture
- Quantity Surveying
- Real Estate

Arts

- Animation
- Art and Design History
- Drama
- Drama (Applied Theatre)
- Drama (Scriptwriting)
- Drama (Acting and Performance)
- Film and TV Production
- Film and Television Studies
- Fine Art

Business

- Accounting
- Accounting and Finance (Top-up course)
- Business (Top-up course)
- Business with Law (Top-up course)
- Business and Finance (Top-up course)
- Business and International Management (Top-up course)
- Business and Marketing (Top-up course)
- Business Leadership and Corporate Management (WBL*)
- Business Management
- Business with Accounting
- Business with Economics
- Business with Entrepreneurship
- Business with Financial Management
- Business with Human Resource Management
- Business with International Management
- Business with Logistics and Supply Chain Management
- Business with Management
- Business with Marketing Management
- Business with Tourism Management
- Entrepreneurial Business Management (WBL*)
- Finance and Investment Management
- Human Resource Management
- International Banking and Finance (Top-up course)
- International Business Management
- International Business Management with French
- International Business Management with Spanish
- International Hospitality and Tourism Management (Top-up course)
- Leadership and Management
- Logistics and Supply Chain Management (Top-up course)
- Marketing Management
- Tourism and Events Management

Computer and Information Sciences

- Applied Computing (top-up course)
- Computer and Digital Forensics BSc/MComp
- Computing and Information Technology (Foundation Year)
- Computer Networks and Cyber Security BSc/MComp
- Computer Science BSc/MComp
- Computer Science with Animation Graphics and Vision BSc/MComp
- Computer Science with Artificial Intelligence BSc/MComp
- Computer Science with Games Development BSc/MComp
- Computer Science with Web Development BSc/MComp
- Information Technology and Data Science
- Information Technology Management for Business

Design

- 3D Design
- Design for Industry
- Fashion
- Fashion Communication
- Fashion Design and Marketing
- Graphic Design
- Interactive Media Design
- Interior Design

Foundation and English Language courses

- Foundation Year Programmes
- Graduate Certificate
- Graduate Diploma
- International Foundation Programme
- Pre-sessional courses
- Summer school pre-sessional courses

Geography

- Environmental Geography
- Environmental Science
- Geography BA (Hons)
- Geography BSc (Hons)
- Physical Geography BSc (Hons)
- Human Geography MGeog
- Physical Geography MGeog

Healthcare, Public Health and Wellbeing

- Midwifery Studies (pre-registration)
- Nursing Science (top-up course)
- Nursing Studies (pre-registration)
- Occupational Therapy
- Physiotherapy

Humanities

- American Studies
- English Language Studies
- English Language and Literature
- English Literature
- English Literature and Creative Writing
- English Literature and History
- History
- History and Politics
- Humanities (Foundation Year)

Law

- Common Professional Examination GDL/CPE
- Graduate Diploma in Law
- LLB (Hons) Law
- LLB (Hons) Law (Foundation Year)
- LLB (Hons) Law with Business
- LLB (Hons) Law with International Business
- M Law Exempting

Mathematics

- Mathematics BSc/MMath

Mechanical and Construction Engineering

- Automotive Engineering BEng/MEng
- Civil Engineering BEng/MEng
- Construction Engineering Management
- Engineering (Foundation Year)
- Mechanical and Architectural Engineering BEng/MEng
- Mechanical and Automotive Engineering BEng/MEng
- Mechanical Design and Engineering (Top-up course)
- Mechanical Engineering BEng/MEng

Nursing, Midwifery and Health

- Midwifery
- Nursing Studies/Registered Nurse (Adult)
- Nursing Studies/Registered Nurse (Child)
- Nursing Studies/Registered Nurse (Learning Disabilities)
- Nursing Studies/Registered Nurse (Mental Health)
- Occupational Therapy
- Operating Department Practice

Physics and Electrical Engineering

- Electrical and Electronic Engineering BEng/MEng
- Electronic Design Engineering (Top-up course)
- Mobile Communications Engineering (Top-up course)
- Physics BSc/MPhys
- Physics with Astrophysics BSc/MPhys

Psychology

- Psychology
- Psychology (Business Psychology)
- Psychology (Clinical Psychology)
- Psychology (Experimental Psychology)
- Psychology (Forensic Psychology)
- Psychology (Health Psychology)
- Psychology with Criminology

Social Sciences

- Criminology
- Criminology and Sociology
- Global Poverty and Development (Top-up course)
- International Relations and Politics
- Journalism
- Journalism and English Literature
- Mass Communication
- Mass Communication with Business
- Mass Communication with Public Relations
- Media and Journalism
- Sociology

Social Work, Education and Community Wellbeing

- Childhood and Early Years Studies
- Guidance and Counselling
- Integrated Health and Social Care
- Post Compulsory Education and Training
- Primary Education
- Social Work

Sport, Exercise and Rehabilitation

- Applied Sport and Exercise Science
- Applied Sport Science with Coaching
- Physiotherapy
- Sport Coaching
- Sport Development
- Sport, Exercise and Nutrition
- Sport Management

* Work-based learning. Not open to students on a Tier 4 visa

Courses correct at time of going to print. Check website for up-to-date information.



FIND OUT MORE AT
NORTHUMBRIA.AC.UK/COURSESEARCH

Applied Sciences

- Biotechnology
- Forensic Science
- International Medicine Pathway
- Microbiology
- Nutritional Science

Architecture and Built Environment

- Architecture
- Future Cities
- Interior Architecture
- Real Estate
- Real Estate (International)
- Surveying (Quantity Surveying)
- Surveying (Building Surveying)
- Surveying (Real Estate)
- Surveying (Housing)

Arts

- Animation
- Art
- Conservation of Fine Art
- Contemporary Arts and Education
- Creative and Cultural Industries Management
- Fine Art
- Preventative Conservation*
- Theatre and Performance

Business

- Business with Business Analytics[^] **
- Business with Entrepreneurship[^] **
- Business with Financial Management[^] **
- Business with Hospitality and Tourism Management[^] **
- Business with Human Resource Management[^] **
- Business with International Management[^] **
- Business with International Management and Finance
- Business with International Management and Marketing
- Business with Logistics and Supply Chain Management[^]
- Business with Management[^]
- Business with Management and Finance
- Business with Management and Marketing
- Business with Marketing Management[^] **
- Coaching MA/PG Diploma/PG Cert
- Digital Marketing**
- Entrepreneurship
- Forensic Accounting
- Global Logistics, Operations and Supply Chain Management[^]
- Human Resource Management and Development
- International Business Management[^]
- International Finance and Investment[^]
- International Financial Management[^]
- International Human Resource Management[^]
- Leadership and Management
- MBA*

Computer Science and Digital Technologies

- Computer Network Technology
- Computer Science
- Computing and Information Technology* **
- Cyber Security**
- Professional Practice[†]
- Web and Mobile Development Technologies[†]

Design

- Design*
- Design Management* **
- Multidisciplinary Innovation

Geography

- Disaster Management and Sustainable Development
- Environmental Health
- Safety, Health and Environmental Management

Humanities

- Applied Linguistics for TESOL
- Creative Writing
- English Literature
- History*
- TESOL*

Information Sciences

- Information Science*
- Information Science (Data Analytics)
- Information Science (Records Management)
- Information Science (Library Management)

Law

- Advanced Legal Practice*
- Bar Practice
- Bar Professional Training Course (BPTC)
- Business Law*
- Commercial Law*
- Data Protection Law and Information Governance*
- Employment Law in Practice*
- Graduate Diploma in Law (GDL)*
- Information Rights Law and Practice*
- International Commercial Law*
- International Trade Law*
- Legal Practice Course (LPC)
- Master of Laws*
- Medical Law*
- Mental Health Law*
- Professional Practice in Law (Mental Health Law)

Mechanical Construction and Engineering

- Construction Project Management with BIM*
- Engineering Management
- Mechanical Engineering
- Project Management*[^] **
- Renewable and Sustainable Energy Technologies

Nursing, Midwifery and Health Courses

- Advanced Clinical Skills ^{^^}
- Clinical Practice (Advanced Critical Care Practice)^{^^}
- Clinical Practice (Advanced Paediatric Critical Care Practice)^{^^}
- Community Specialist Practice District Nursing
- Health and Social Care
- Health and Social Care Leadership
- Master of Clinical Practice (Advanced Critical Care Practice)^{^^}
- Master of Clinical Practice (Advanced Paediatric Critical Care Practice)^{^^}
- Nursing
- Nursing Leadership
- Practice Development
- Professional Non-Surgical Aesthetic Practice
- Specialist Community Public Health Nursing (Health Visiting)
- Specialist Community Public Health Nursing (School Nursing)
- Specialist Community Public Health Nursing (Sexual Health)
- Teaching and Learning in Professional Practice

Physics and Electrical Engineering

- Electrical Power Engineering
- Microelectronic and Communication Engineering

Psychology

- Psychology
- Health Psychology
- Occupational and Organisational Psychology
- Sport and Exercise Psychology

Social Sciences

- Criminology and Criminal Justice
- International Development
- Mass Communication Management**

Social Work, Education and Community Wellbeing

- Approved Mental Health Professional
- Autism
- Early Primary Education
- Early Years Education
- Early Years Education (Early Years Teacher Status)
- Education
- Education (Framework)
- Healthcare Management
- Master of Public Health
- Mental Health Professional Practice
- Occupational Therapy
- Primary Education
- Professional Social Work Practice
- Secondary Art, Craft and Design
- Social Work
- Teach First
- Teaching Pupils with Dyslexia within an Education and Training Setting

Sport, Exercise and Rehabilitation

- Clinical Exercise Physiology
- Exercise Science
- International Sport Management
- Physiotherapy
- Strength and Conditioning

2 Year Masters

A number of our PG courses are offered over a longer period than the traditional one-year route, taking into account a second year where you have the option of undertaking an Advanced Practice or Study Abroad option.

Advanced Practice options

Internship: This route offers the opportunity to spend three months working full-time in one of the many companies and organisations with which we have close links.

Business Clinic (Business Courses): Work in the Business Clinic within our Business School and gain experience providing consultancy services to businesses in the region.

Research (Engineering, Environment, Computing Courses): Carry out work with one of the Research Groups within the Faculty. There is every possibility that you may contribute to published research and therefore you may be named as part of the research team, which would be a great start to a research career.

Study Abroad: Spend a semester studying at one of our many partner institutes, where we have exchange agreements with universities all over the world, including partners in Europe, Asia, South America and Oceania.

Discover more and a full list of courses that offer the 2-year Masters option at www.northumbria.ac.uk/coursesearch

Postgraduate Research

Postgraduate students are a vitally important part of our research landscape, with over 500 students studying for research degrees (MPhil, MRes, PhD, Professional Doctorate) across the university.

We have a vibrant community of postgraduate researchers, supported by excellent facilities and offer a range of PhD/MPhil programmes, research projects, and studentships throughout the year, across all academic departments.

Discover current research opportunities at www.northumbria.ac.uk/research and select postgraduate research.

**FIND OUT MORE AT
NORTHUMBRIA.AC.UK/COURSESEARCH**

* Available to study via distance learning degrees.

[^] Advanced Practice or Study Abroad module option

** Also available at London campus

^{^^} These courses are only available to Trust employees appointed into the role of Advanced Critical Care Practitioner or Advanced Paediatric Critical Care Practitioner

[†] Only available at London Campus

Courses correct at time of going to print. Check website for up-to-date information.

FEES AND FINANCE

INDIVIDUAL COURSE FEES AVAILABLE ONLINE AT NORTHUMBRIA.AC.UK/INTERNATIONALDISCOUNTS



INTERNATIONAL STUDENTS
20% ALUMNI DISCOUNT FOR POST-GRADUATE STUDY
A RANGE OF SCHOLARSHIPS AND BURSARIES
EARLY PAYMENT DISCOUNTS AVAILABLE

EU STUDENTS
EU STUDENTS RECEIVE A SIMILAR LEVEL OF FINANCIAL SUPPORT TO UK STUDENTS.

GENEROUS SCHOLARSHIPS ARE AVAILABLE TO HELP STUDENTS WITH LIVING COSTS.

Tuition fee loan
 All students are eligible for a tuition fee loan to pay for their course and all students are eligible, regardless of household income. Find out more at gov.uk/studentfinance

Scholarships
 Our generous non-repayable scholarships are cash contributions awarded to high-achieving students.

EU Academic Excellence Scholarships
 These scholarships are also offered to eligible European Union (EU) students. Find out more at northumbria.ac.uk/ugscholarshipsEU or northumbria.ac.uk/pgscholarshipsEU

➔
FIND OUT MORE AT
NORTHUMBRIA.AC.UK/INTERNATIONALDISCOUNTS

➔
FIND OUT MORE AT
NORTHUMBRIA.AC.UK/INTERNATIONALDISCOUNTS

GENEROUS SCHOLARSHIPS FOR ELITE LEVEL STUDENT ATHLETES

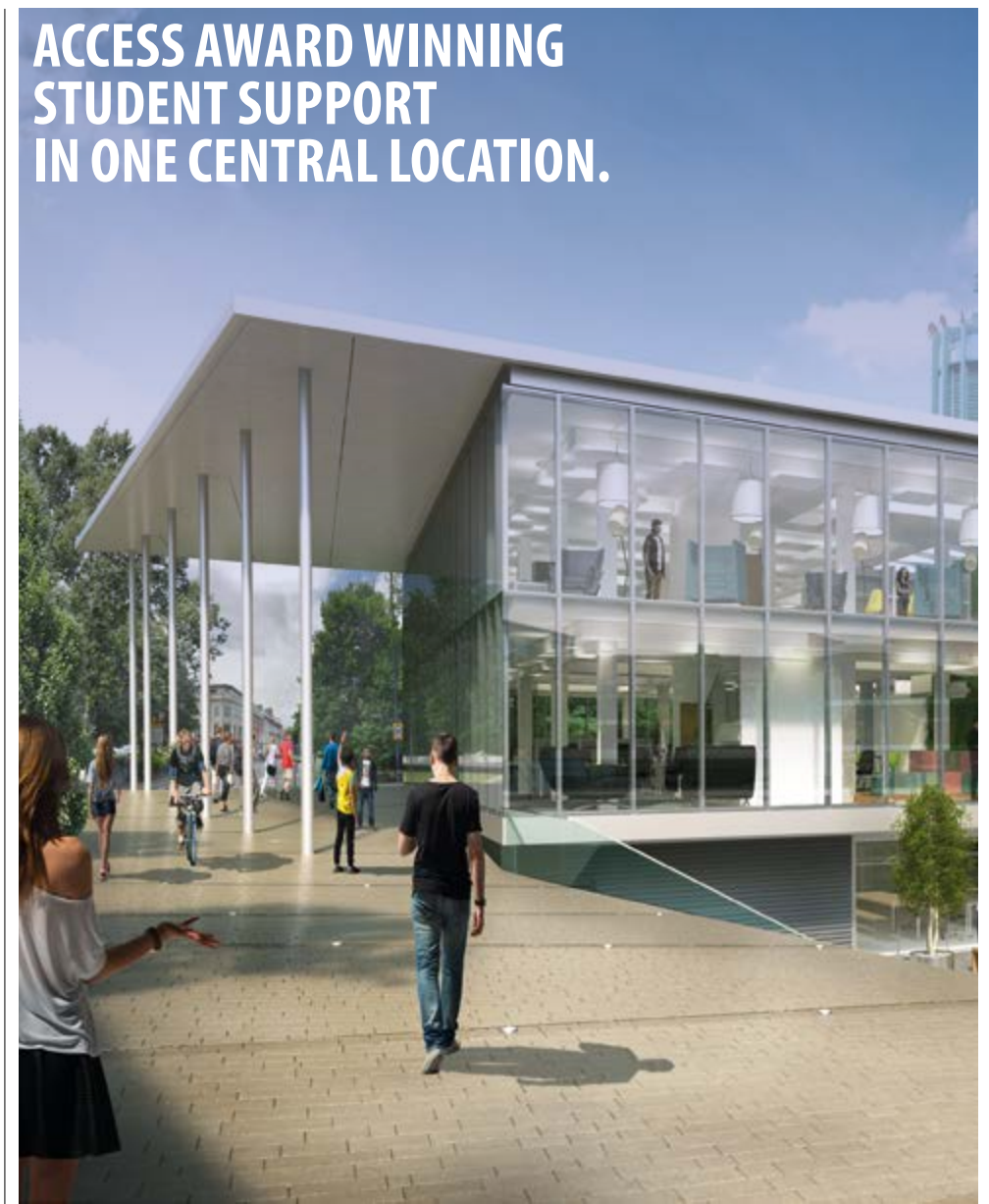


You don't have to study sport to be a student athlete.
 Our Sport Scholarship Scheme helps the most talented student athletes achieve their academic and athletic ambitions through a nationally leading programme of athlete support services and a number of part-funded tuition fee scholarships.

➔
FIND OUT MORE AT
NORTHUMBRIASPORT.COM

STUDENT SUPPORT

ACCESS AWARD WINNING STUDENT SUPPORT IN ONE CENTRAL LOCATION.



Student Central
 Artist's impression (opening September 2017)

SERVICES INCLUDE:
FINANCE
WELFARE
HEALTH
VISA AND IMMIGRATION
DISABILITY AND DYSLEXIA
FREE AIRPORT PICK UP SERVICE



YOUR INTERNATIONAL APPLICATION JOURNEY STARTS HERE

This is our guide to the undergraduate admissions process, showing the main steps you'll need to follow. Remember to allow plenty of time to apply and take note of our application deadlines.

Applications can be made to most of our courses by using the Apply Online function on the individual course listing.

Applicants can also apply for undergraduate courses via the Universities and Colleges Admissions Service (UCAS).

As well as team of dedicated staff in the UK, we also have regional offices in China, Malaysia, India, and Thailand and a permanent representative in West Africa.

International postgraduate applicants
Apply online via our website northumbria.ac.uk*

*Exceptions include PGCE and Law professional courses, where you apply directly to the professional body.

1. RESEARCH

Visit: northumbria.ac.uk/international for information on how to apply, our courses and what the university and region has to offer.

2. APPLY

You can apply for our programmes online via our course search facility or via UCAS if you are applying for an undergraduate programme.

3. SELECTION

Northumbria will consider your application and decide whether to make you an offer. We may request further information such as a portfolio or invite you to an interview, either in person or via Skype.

7. DEPOSIT

Most applicants are required to pay a deposit to secure their place.

6. MEET YOUR CONDITIONS

If your offer was conditional, it is important for you to provide us with your results as soon as possible.

If you don't meet your conditions, don't worry we may be able to offer you an alternative programme so it is important to still send us your results.

5. ACCOMMODATION

Once you have an offer from Northumbria you will be sent details on how to apply online for accommodation by email.

We guarantee to find all new international students accommodation and you can even select your own room when you book.

4. DECISIONS

Once we have considered your application we will let you know the outcome by email. An offer will either be unconditional or conditional, depending if you have completed your qualifications or are still working towards them.

8. VISA

Once you have completed all the previous steps, the university will issue you a CAS to apply for your visa if you require one. It is important to prepare your visa application in good time so you can arrive in time for inductions.

9. BOOK MEET AND GREET

We have a dedicated team who will meet you at Newcastle International Airport and help you settle into your accommodation. This is a free service but you must book in advance.

10. SELF-REGISTRATION

Before you arrive you should complete self-registration online.

11. WELCOME TO NORTHUMBRIA!

Once you arrive at the university, you will need to attend a campus enrolment session. Our induction and welcome events will help you find out more about life at Northumbria and make new friends from around the world.

YOUR EU APPLICATION JOURNEY STARTS HERE

1. RESEARCH

Visit www.northumbria.ac.uk/study to explore your study options, or meet the university's EU team at an education fair in your home country.

2. APPLY

Submit your application through UCAS Apply. Remember the key deadlines.

3. SELECTION

Each university will consider your application and decide whether to make you an offer. You may be asked to provide further information, submit a portfolio or attend an interview.

6. ACCOMMODATION

If you accept an offer from the university, you will receive information about how to book your accommodation via e-mail.

5. MAKE YOUR FIRM AND INSURANCE CHOICES

Once you have received all of your decisions use UCAS Track to choose your first (firm) and second (insurance) choices.

4. DECISIONS

Check UCAS Track regularly to see the decisions from each university. An unconditional offer means that you meet all the requirements for the course. A conditional offer means that you will need to meet conditions (e.g. achieve certain grades in your final exams) before you can join your chosen programme.

7. MEET YOUR CONDITIONS

If you have a conditional offer, you need to meet the conditions on that offer before you can join the university.

8. I HAVE MET MY CONDITIONS – WHAT NEXT?

We need to see evidence that you have met your conditions. You can send documents such as exam certificates and test results to the university's admissions team at er.admissions@northumbria.ac.uk. You should also supply translations if any of your documents are not in English.

WHAT IF I DON'T MEET MY CONDITIONS?

Please contact our admissions team at er.admissions@northumbria.ac.uk as soon as possible as we may still be able to accept you.

9. ENROL ONLINE

You will be sent further information on how to enrol on your programme before you arrive in Newcastle.

10. MEET AND GREET

We have a dedicated team who will meet you at Newcastle International Airport and help you settle into your university accommodation. This is a free service but you must book in advance.

11. WELCOME TO NORTHUMBRIA!

Our induction and welcome events will help you find out more about life at Northumbria and make new friends from around the world.

This is our guide to the undergraduate admissions process, showing the main steps you'll need to follow. Remember to allow plenty of time to apply and take note of our application deadlines.

The Universities and Colleges Admissions Service (UCAS) processes applications for all undergraduate courses. The UCAS institution code for Northumbria University is NORTH N77.

Applications are made using the secure, web based application system UCAS Apply at ucas.com

You can apply for up to five courses. Each course can be at a different university or you can apply for multiple courses at each institution.

All applications are treated equally and admissions selectors will not be able to see which other institutions you have applied to, so you should not express any order of preference when you apply.

EU postgraduate applicants
Apply online via our website northumbria.ac.uk*

*Exceptions include PGCE and Law professional courses, where you apply directly to the professional body.

INTERNATIONAL ENQUIRIES

(+44) 191 227 4274

INTERNATIONAL@NORTHUMBRIA.AC.UK

INTERNATIONAL ADMISSIONS

(+44) 191 243 7906

INTERNATIONALADMISSIONS@NORTHUMBRIA.AC.UK

EU ENQUIRIES

EURECRUITMENT@NORTHUMBRIA.AC.UK

EU ADMISSIONS

ER.ADMISSIONS@NORTHUMBRIA.AC.UK

London campus

Northumbria University
110 Middlesex Street
London
E1 7HT

Student general enquiries

london.enquiries@northumbria.ac.uk

Recruitment line (International students)

Tel: +44 (0)20 8003 0673

Recruitment line (EU students)

Tel: +44 (0)20 8108 2180

www.northumbria.ac.uk/london

Overseas Offices

Thailand

Also responsible for
Indonesia, Cambodia,
Myanmar, Pakistan and
Vietnam.

Northumbria University
Thailand Office,
c/o York Institute,
283/46, Unit 1001-1,
Home Place Building,
10 Fl Sukhumvit 55, (Thonglor 13),
Bangkok 10110,
Thailand

Tel: (+66) 2 712 9197
thaioffice@northumbria.ac.uk

India

Also responsible for
Bangladesh and Nepal.

Northumbria University
India Liaison Office,
3rd Floor, Devika Towers,
Nehru Place, New Delhi,
110019, India

Tel: (+91) 114 212 4037
ashwini.thakur@northumbria.ac.uk

Northumbria University
India Liaison Office,
Regus Peninsula Business Centre
Private Limited,
"Amara Sri" Old No. 313,
New No. 455,
Block No. 75, 7th Floor,
Anna Salai, Teynampet,
Chennai,
600018, India

Tel: (+91) 444 904 8374
asha.balaji@northumbria.ac.uk

P. R. China

Northumbria University
China Office,
Room 1503, Block B,
Winterless Centre,
Jia 1, Xi Da Wang Road,
Chaoyang District,
Beijing 100026, P. R. China

Tel: (+86) 10 6538 8135
Fax: (+86) 10 6538 8136
chinaoffice@northumbria.ac.uk

Malaysia

Also responsible for
Brunei, Hong Kong, the
Philippines, Singapore,
Taiwan and South Korea.

Northumbria University
Malaysia Office,
A-8-3, 8th Floor, Block A,
Northpoint Midvalley,
Midvalley City,
1, Jalan Syed Putra Utara,
59200 Kuala Lumpur,
Malaysia

Tel: (+60) 3 2287 8080
Fax: (+60) 3 2287 8282
malaysiaoffice@northumbria.ac.uk

Africa

UKEAS Office, 6A Adeola
Odeku Street, Victoria
Island, Lagos, Nigeria
Doyin Oladiran
In-country Officer,
Northumbria University

Tel: (+234) 8188 157535
doyin.oladiran@northumbria.ac.uk
Skype: oladiran.doyinsola

CONNECT WITH US

[@NUSTUDENTS](https://www.instagram.com/nustudents)

[NORTHUMBRIAINTERNATIONAL](https://www.facebook.com/northumbriainternational)

[NORTHUMBRIAINTERNATIONAL](https://www.twitter.com/northumbriainternational)

Lined area for taking notes, featuring horizontal lines and a decorative illustration at the bottom.



WWW.NORTHUMBRIA.AC.UK

(+44) 191 227 4274

CONNECT WITH US

 @NUSTUDENTS

 NORTHUMBRIAINTERNATIONAL

 NORTHUMBRIAINTERNATIONAL